

Villa Elisabeth

Profile

A protected architectural monument, the Villa Elisabeth makes an impression through its grandeur and its historical charm. Through the spacious foyer and up the wide steps with wrought iron railings, the visitor arrives in the Main Hall, replete with stucco-ornamented columns and archways that support the overhanging gallery, as well as herringbone parquet hardwood floors, wainscoting, and heavy wooden double-doors. The grounds of Villa, along with the enclosed churchpark – a verdant gem in Berlin-Mitte – offer a place for rest and reflection. As both an independently-run and public space, the Villa Elisabeth serves as a venue for a diverse, curated cultural program. The Villa focuses primarily on Contemporary Composition and Early Music, experimental as well as interdisciplinary formats, but also hosts classical Chamber Music concerts, recitals and vocals with smaller instrumentation. The Villa is also proud to host modern Music and Dance Theater, as well as experimental projects of emerging artists.

History of the Villa Elisabeth

The Villa Elisabeth was inaugurated as the parish hall for the neighboring St. Elisabeth Church in 1907, and was home to its vigorous parish life. After the destruction of the church in 1945, the Villa Elisabeth served additionally as the place of worship and religious services, until joining with the Elisabeth Parish in 1998. In 2003, the Elisabeth Cultural Bureau (Kultur Büro Elisabeth) was established, in order to use the St. Elisabeth Church together with the Villa Elisabeth as a cultural venue oriented towards a broader public.

Rooms and Capacity

The Main Hall on the first floor (305 m²), and Gallery on the second floor (171 m²), each with an adjoining room offering access to the the Main Hall and Gallery respectively, and containing separate staircases. The Foyer on the ground floor (141 m²), Studio 1 and Studio 2 (132 m²) and Studio 3 (53 m²), the main staircase, one restroom with handicap access on the ground floor, ladies' room on the first floor, men's room on the second floor. Maximum capacity: 400 persons standing, 230 in seated rows, 50 seats on the Gallery. Maximum 200 persons banquet seating. No parking on the premises, however loading zones are available.

Facilities/Technical Capabilities/Catering

400 designer chairs, 120 stacking chairs, 25 wooden chairs, 30 tables, 1 white half-round bar and 1 reception counter including lighting, 6 coat racks, 1 concert grand piano Boston Steinway (GP-193), 12 stage platforms, sound and lighting equipment, a video projector, projection screen, and further equipment available upon request. A detailed inventory can be found on our website. There is one high voltage outlet on each floor, with a maximum of 100 amperes on the 1st and 2nd floors. For artistic events, a house bar in the foyer of the Villa or in front of the Church is available. In the case of rentals, we gladly offer a custom bid upon request. There is, however, no obligation to use our catering or technical partners.

Please note

As of 10 pm, a law regarding neighborhood noise reduction is in effect. Between 10 pm and 8 am deliveries, as well as any driving on the premises are prohibited. Smoking is prohibited in all of the buildings. Candles are permitted only in fireproof vessels containing sand or water.



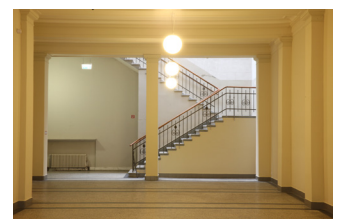
Hall w. gallery 1st/2nd floor: 305 + 171 m²



Studio 1+2 on ground floor: 132 m²



Studio 3 on ground floor: 53 m²



Foyer: 141 m²

Kultur Büro Elisabeth gGmbH
Invalidenstr. 4a
10115 Berlin
Tel 030 – 4404 36 44
Fax 030 – 4404 23 62
info@elisabeth.berlin
www.elisabeth.berlin

Contact for artistic events:
kultur@elisabeth.berlin
Contact for renting:
vermietung@elisabeth.berlin

KULTUR BÜRO
ELISABETH

KULTUR RAUM GEBEN.



Map Villa Elisabeth & St. Elisabeth-Church

Invalidenstr. 3
10115 Berlin

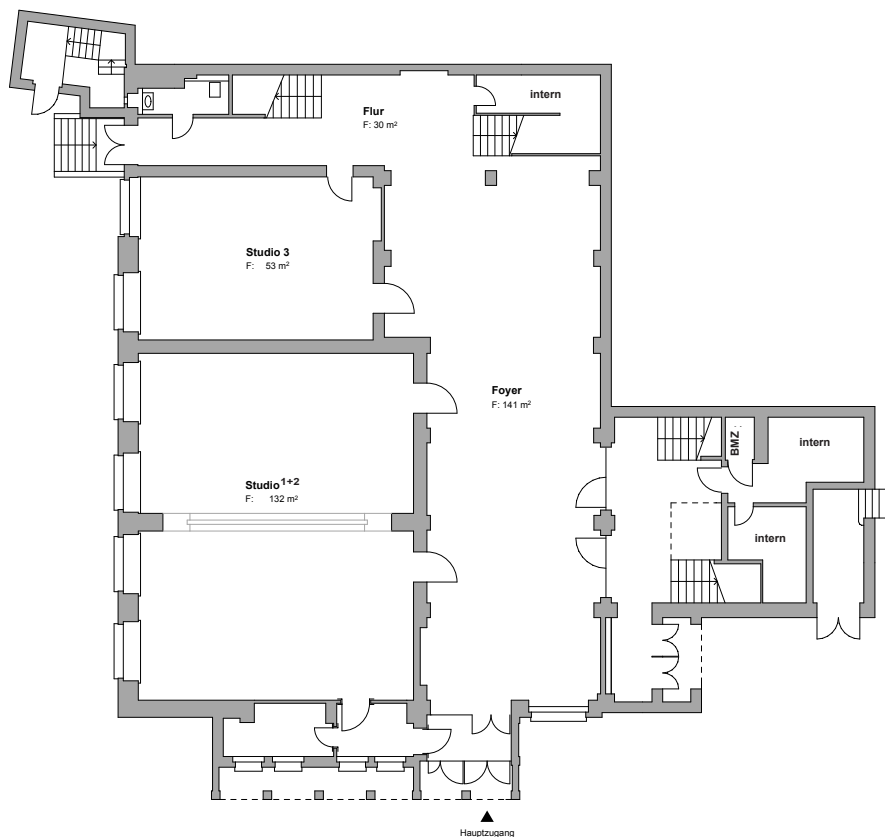
Arrival by public transit:

U8 Rosenthaler Platz,
S1/2/25/26 Nordbahnhof,
Tram M8/M12 Brunnen/
Invalidenstr.

No parking facilities on
area.

Delivery zones available.

Vehicle access via
Elisabethkirchstraße.



Floorplan

Villa Elisabeth Ground Floor

Size:

Foyer: 141 m²

Studio 1+2: 132 m²

(Seperable with curtain)

Studio 3: 53 m²

Height EG: 4,83 m

Capacity:

Studio 1+2

Row seated:

90 Pax or two times

50 Pax

chair circle: ca. 35 Pax

parliamentary: 50 Pax

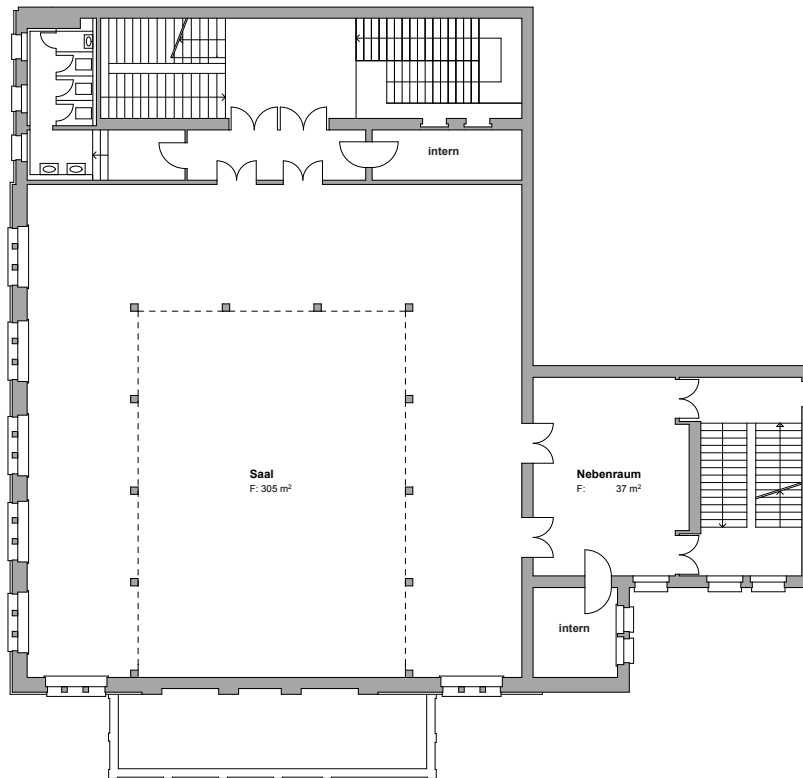
Studio 3

e.g. wardrobe/ catering

back office / storage

room/ room for rehearse

Row seated: 50 Pax



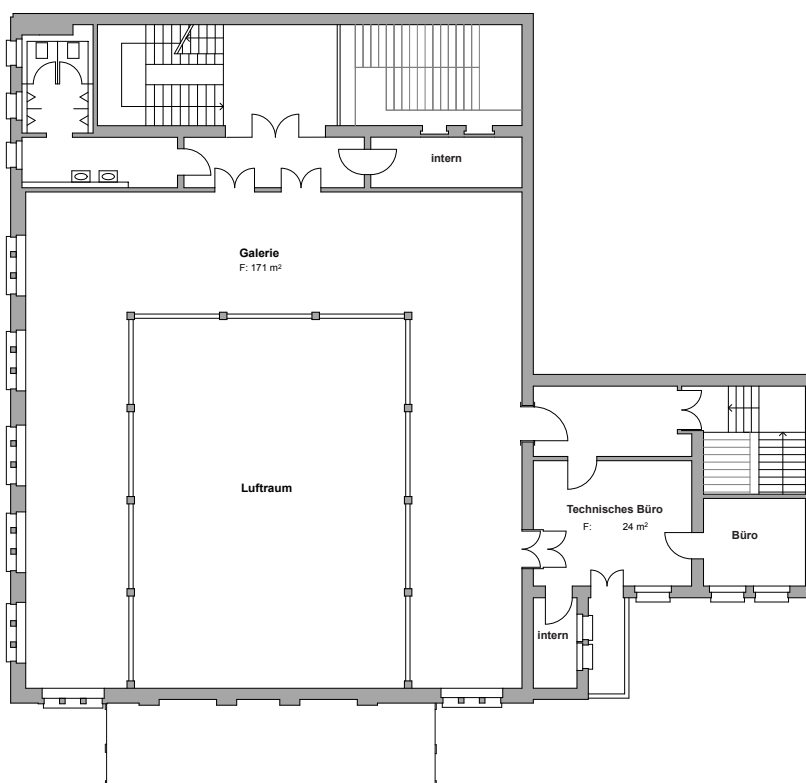
Floorplan Villa Elisabeth First floor

Size:

Hall: 305 m²/
Height: 8,27 m under
gallery area: 3,18 m
Ajoining room: 37 m² /
Height: 3,17 m

Capacity:

Row seated: 230 Pax
Parliamentary: 150 Pax
Banquet: 200 Pax
Standing: max. 400 Pax



Floorplan Villa Elisabeth Second floor

Size:

Gallery:
171 m² / Height: 3,95 m
Ajoining room:
24 m² / Height: 3,40 m

Capacity:

Row seated: 55 Pax
= 1 row along the railing
plus standing places
2nd possible, but reduced
visibility – alternatively
standing places

Futher information about wiring & seating:

www.elisabeth.berlin/
download

St. Elisabeth-Church

Profile

The St. Elisabeth Church is a place where history is palpable. Its large hall provides an open space for artists and artistic uses of various kinds, right in the city center. It is a place of artistic exploration, of improvisation, concentration and of dialogue between Culture and the Church.

Our focus lies primarily in Early Music and Contemporary Classical Music, as well as in contemporary musical, spoken or dance theater, and art, especially in regards to experimental as well as interdisciplinary and multimedia projects. The Church's park grounds, also a historical monument and a verdant gem in Berlin-Mitte, offer the visitor a place for rest and reflection.

History of the Church

In 1835, the Rosenthaler suburb was granted, for the "moral elevation of conditions" there, its own church, which was built in the "antique style" by Architect Karl Friedrich Schinkel by order of King Wilhelm III (1770-1840). The church, renovated in 1935 for the centenary, burned to the ground in 1945. Remaining in a state of ruin for almost 50 years, the St. Elisabeth Church was finally secured in 1991 and has been restored since 1999 with funds from the German Foundation for Monument Protection, the Provincial Monuments Office, the Urban Heritage Program and private donations.

Rooms and Capacity

The Church Hall (315 m²), with two sacristies in the front of the hall, both on the left and the right (20 and 29 m² respectively), an entrance hall (30 m²) with two restrooms, a gallery (for technical equipment, access exclusively for team members), and a wheelchair ramp to the right of the main entrance. The church has no heating, though external heating is available. Additional restrooms as well as rooms (e.g. dressing rooms for artists or catering, back office, etc.) are available in the Villa Elisabeth next door.

Maximum capacity: 350 people seated or 400 people standing, banquet seating can accommodate ca. 200 people. No parking on the premises, however loading zones are available.

Facilities/Technical Capabilities/Catering

Various three-phase current connections (16+32A), with a maximum of 100 amperes. House lighting, stage lighting (basic equipment plus event equipment and inventory of the Villa Elisabeth, if available). Inventory list and seating plans are available on our website.

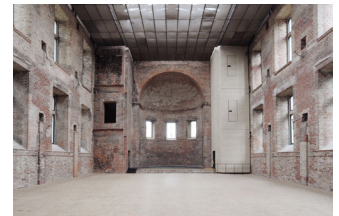
For artistic events a house bar in the foyer of the Villa or in front of the Church is available. In the case of rentals, we gladly offer a custom bid upon request. There is, however, no obligation to use our catering or technical partners.

Please note

As of 10 pm, a law regarding neighborhood noise reduction is in effect. Between 10 pm and 8 am deliveries, as well as any driving on the premises are prohibited. Smoking is prohibited in all of the buildings. Candles are permitted only in fireproof vessels containing sand or water.



Exterior view with Villa Elisabeth



Viewing to the apse, 1st floor: 315 m²



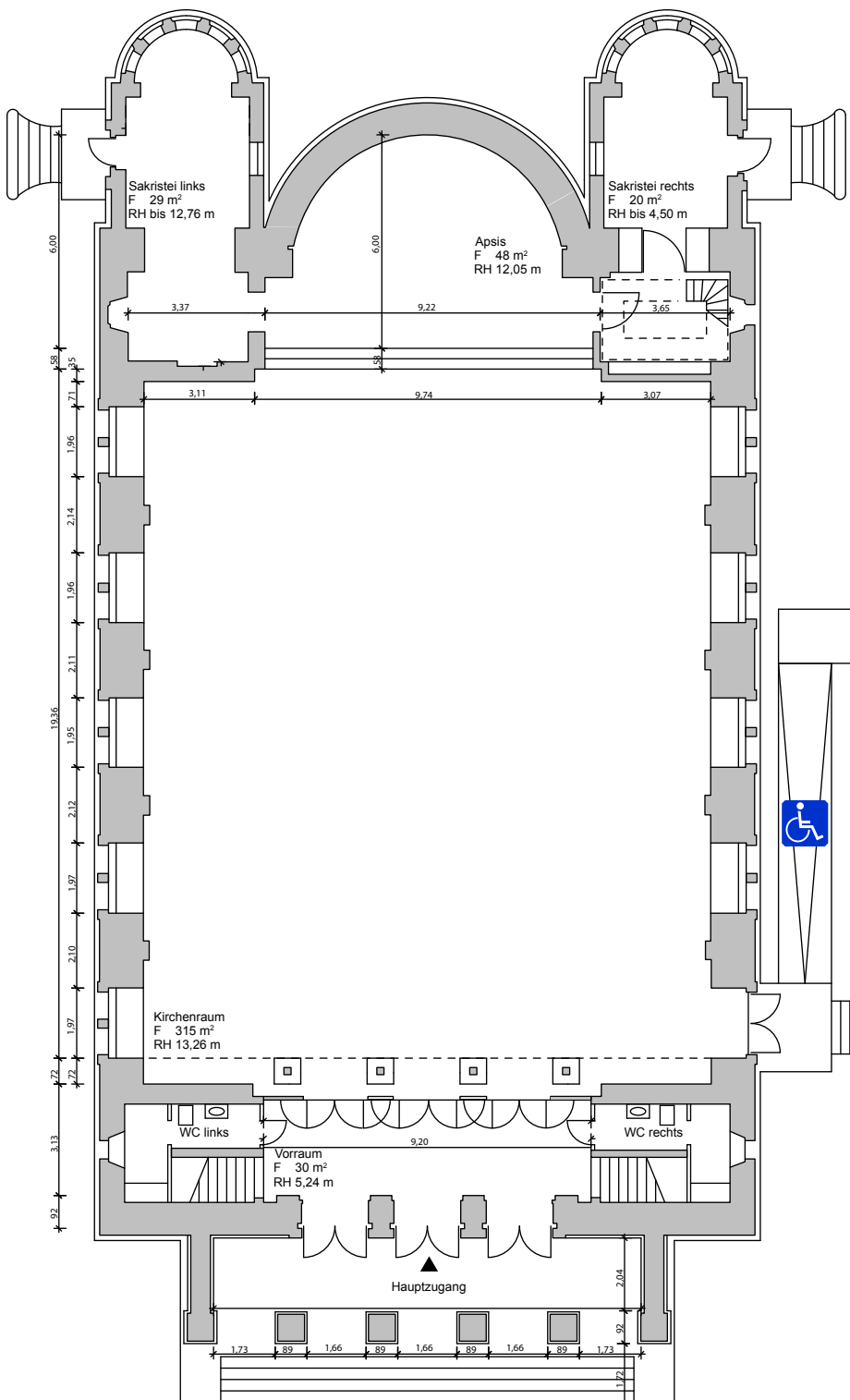
Viewing direction to the entrance



Dinner in St. Elisabeth

Kultur Büro Elisabeth gGmbH
Invalidenstr. 4a
10115 Berlin
Tel 030 – 4404 36 44
Fax 030 – 4404 23 62
info@elisabeth.berlin
www.elisabeth.berlin

Contact for artistic events:
kultur@elisabeth.berlin
Contact for renting:
vermietung@elisabeth.berlin



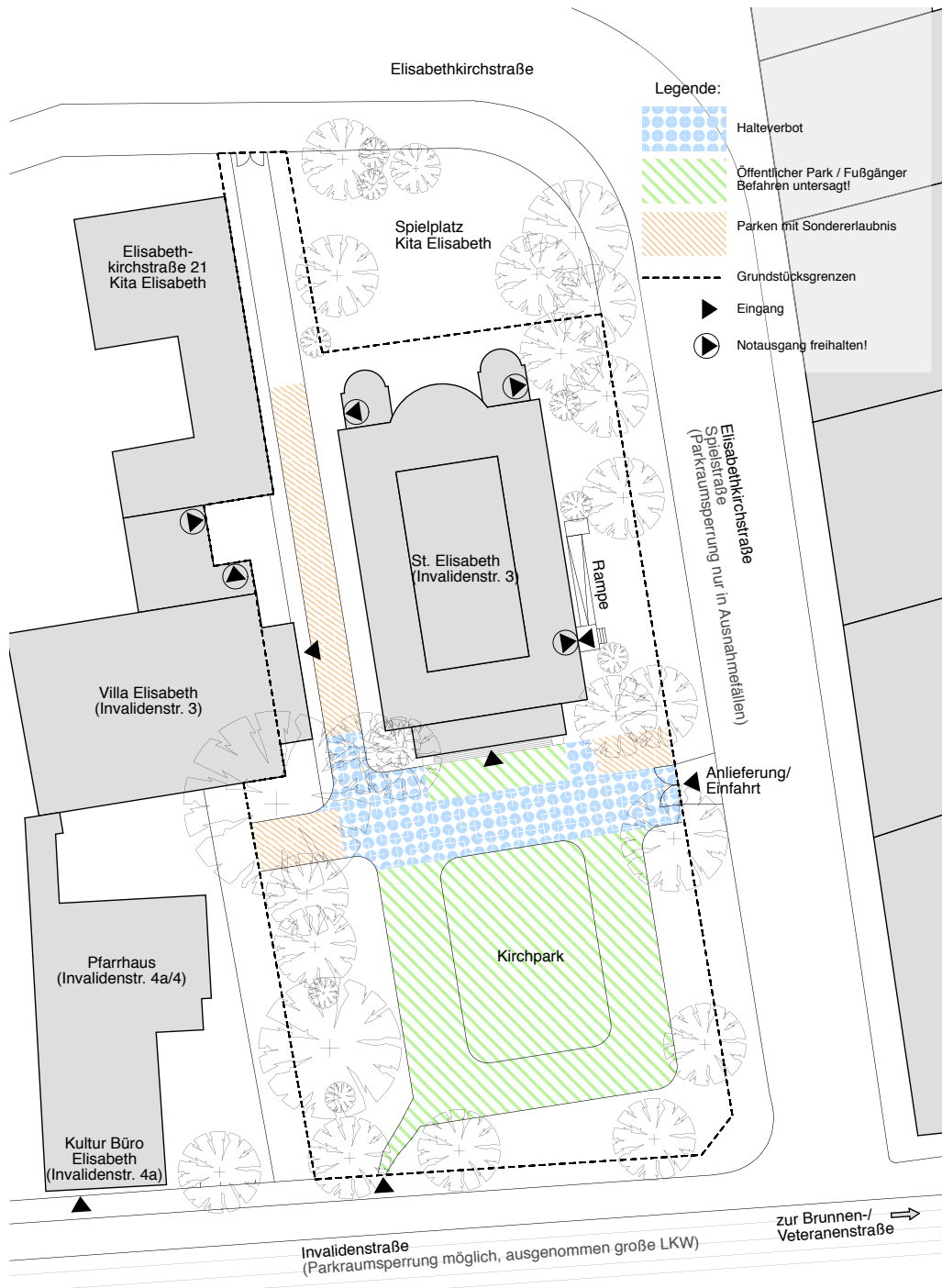
Floorplan St. Elisabeth-Church

Size:
Churchroom: 315 m²
Apse: 48 m²
Entrance hall: 30 m²
Sacristy left: 29 m²
Sacristy right: 20 m²
Gallery: ca. 14 m²

Height: 13,46 m

Capacity:
Row seated: 350 Pax
Banquet: 200 Pax
Standing: 500 Pax

**Further information
about wiring & seating:**
[www.elisabeth.berlin/
download](http://www.elisabeth.berlin/download)



Exterior area and park of the St. Elisabeth- Church and the Villa Elisabeth

Invalidenstr. 3
10115 Berlin

Arrival by public transit:

U8 Rosenthaler Platz,
S1/2/25/26 Nordbahnhof,
Tram M8/M12 Brunnen/
Invalidenstr.

No parking facilities on
area. Delivery zones
available.

Vehicle access via
Elisabethkirchstraße.

Kultur Büro Elisabeth gGmbH

Invalidenstr. 4a

10115 Berlin

Tel 030 – 4404 36 44

Fax 030 – 4404 23 62

info@elisabeth.berlin

www.elisabeth.berlin

Contact for artistic events:

kultur@elisabeth.berlin

Contact for renting:

vermietung@elisabeth.berlin